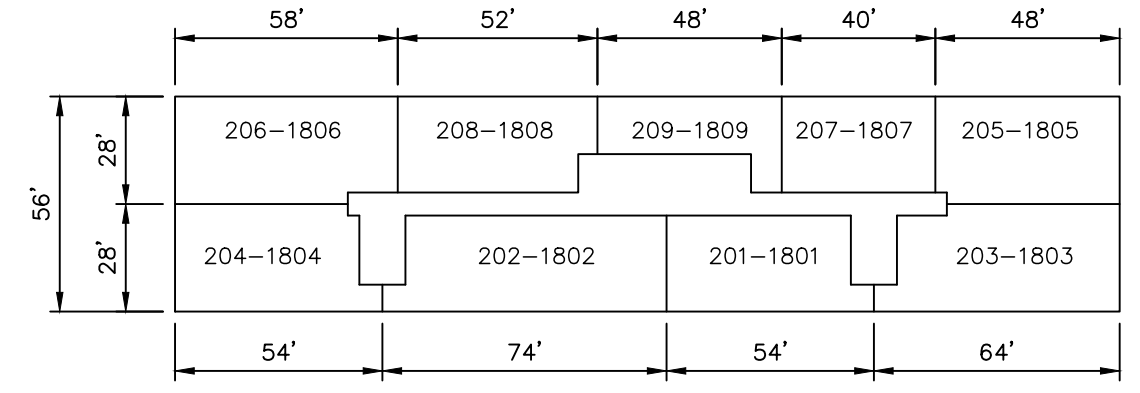
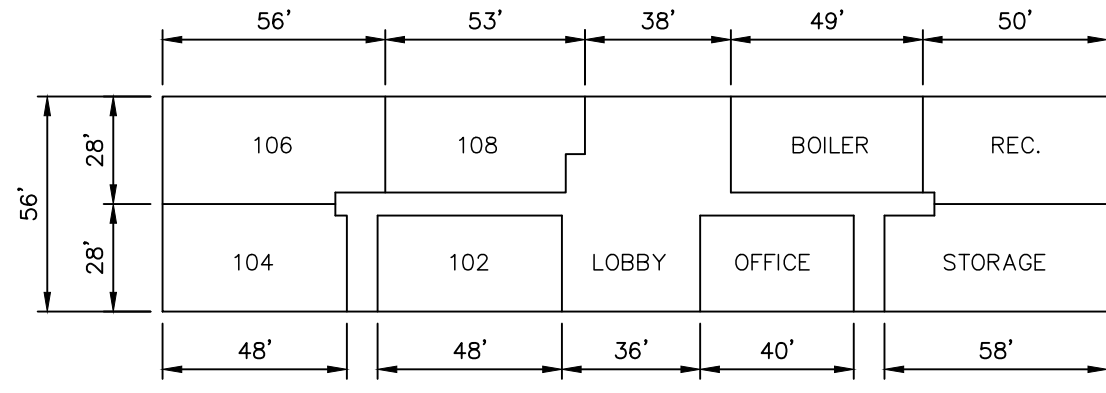
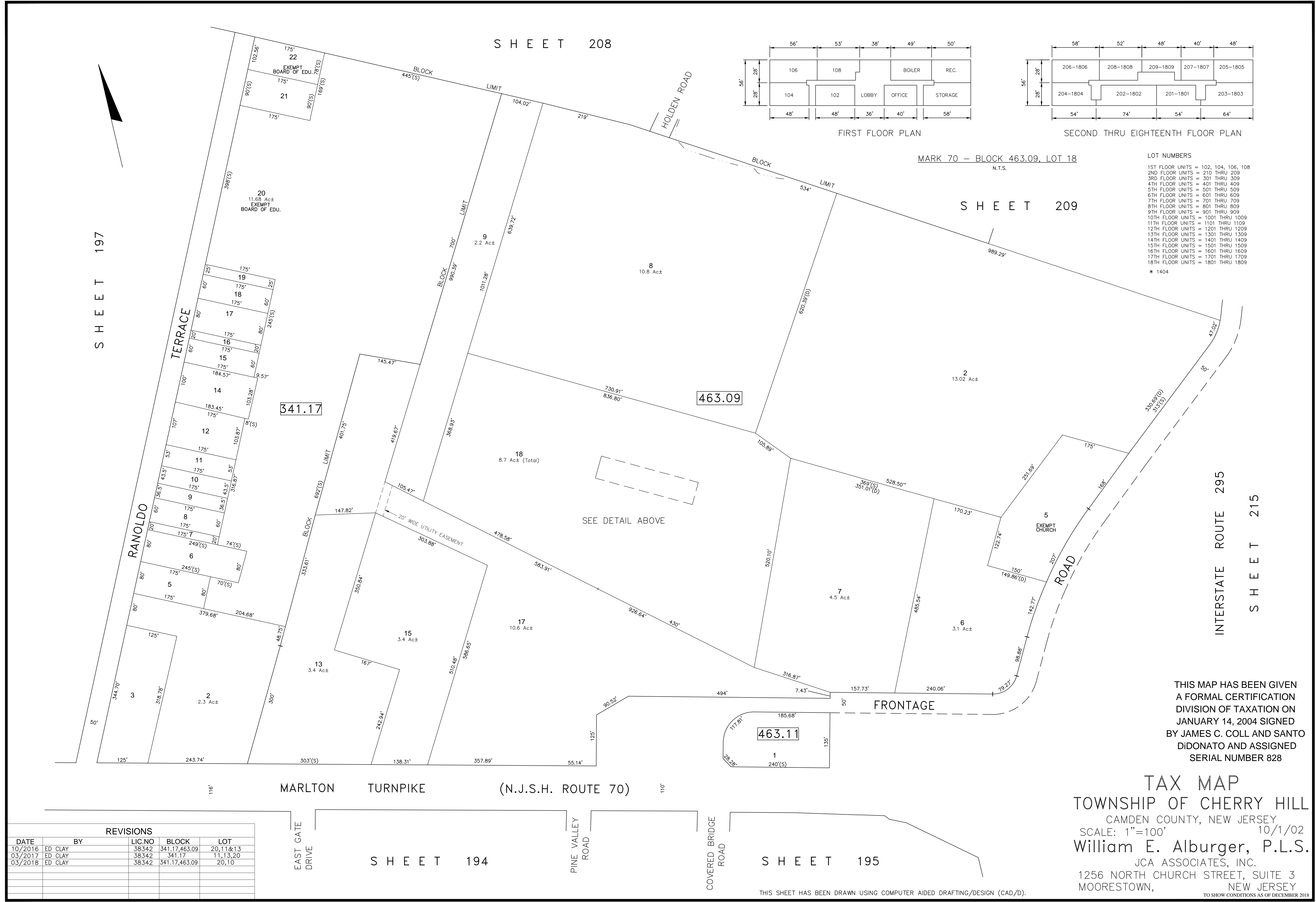


SHEET 208

SHEET 209

SHEET 197

INTERSTATE ROUTE 295
SHEET 215



FIRST FLOOR PLAN

SECOND THRU EIGHTEENTH FLOOR PLAN

MARK 70 - BLOCK 463.09, LOT 18
N.T.S.

- LOT NUMBERS
- 1ST FLOOR UNITS = 102, 104, 106, 108
 - 2ND FLOOR UNITS = 210 THRU 209
 - 3RD FLOOR UNITS = 301 THRU 309
 - 4TH FLOOR UNITS = 401 THRU 409
 - 5TH FLOOR UNITS = 501 THRU 509
 - 6TH FLOOR UNITS = 601 THRU 609
 - 7TH FLOOR UNITS = 701 THRU 709
 - 8TH FLOOR UNITS = 801 THRU 809
 - 9TH FLOOR UNITS = 901 THRU 909
 - 10TH FLOOR UNITS = 1001 THRU 1009
 - 11TH FLOOR UNITS = 1101 THRU 1109
 - 12TH FLOOR UNITS = 1201 THRU 1209
 - 13TH FLOOR UNITS = 1301 THRU 1309
 - 14TH FLOOR UNITS = 1401 THRU 1409
 - 15TH FLOOR UNITS = 1501 THRU 1509
 - 16TH FLOOR UNITS = 1601 THRU 1609
 - 17TH FLOOR UNITS = 1701 THRU 1709
 - 18TH FLOOR UNITS = 1801 THRU 1809
- * 1404

REVISIONS				
DATE	BY	LIC NO	BLOCK	LOT
10/2016	ED CLAY	38342	341.17, 463.09	20, 11&13
03/2017	ED CLAY	38342	341.17	11, 13, 20
03/2018	ED CLAY	38342	341.17, 463.09	20, 10

MARLTON TURNPIKE (N.J.S.H. ROUTE 70)

EAST GATE DRIVE

PINE VALLEY ROAD

COVERED BRIDGE ROAD

SHEET 194

SHEET 195

THIS SHEET HAS BEEN DRAWN USING COMPUTER AIDED DRAFTING/DESIGN (CAD/D).

THIS MAP HAS BEEN GIVEN A FORMAL CERTIFICATION DIVISION OF TAXATION ON JANUARY 14, 2004 SIGNED BY JAMES C. COLL AND SANTO DIDONATO AND ASSIGNED SERIAL NUMBER 828

TAX MAP
TOWNSHIP OF CHERRY HILL
CAMDEN COUNTY, NEW JERSEY
SCALE: 1"=100' 10/1/02
William E. Alburger, P.L.S.
JCA ASSOCIATES, INC.
1256 NORTH CHURCH STREET, SUITE 3
MOORESTOWN, NEW JERSEY
TO SHOW CONDITIONS AS OF DECEMBER 2018